



This bike map is printed on water-resistant Polyart. Polyart is made of high-density polyethylene (HDPE) and is therefore 100% recyclable in category 2 HDPE (recycle with plastic not paper).

DEBRIS IN THE BIKE LANE?

Bike lane sweeping requests shall be made to the proper agency that owns the roadway. Visit the Washoe County Assessor mapping website at <https://gis.washoecounty.us/wrms/> and search "road jurisdiction" to find out who is responsible for the roadway and then contact them directly.

City of Reno
(775) 334-4636

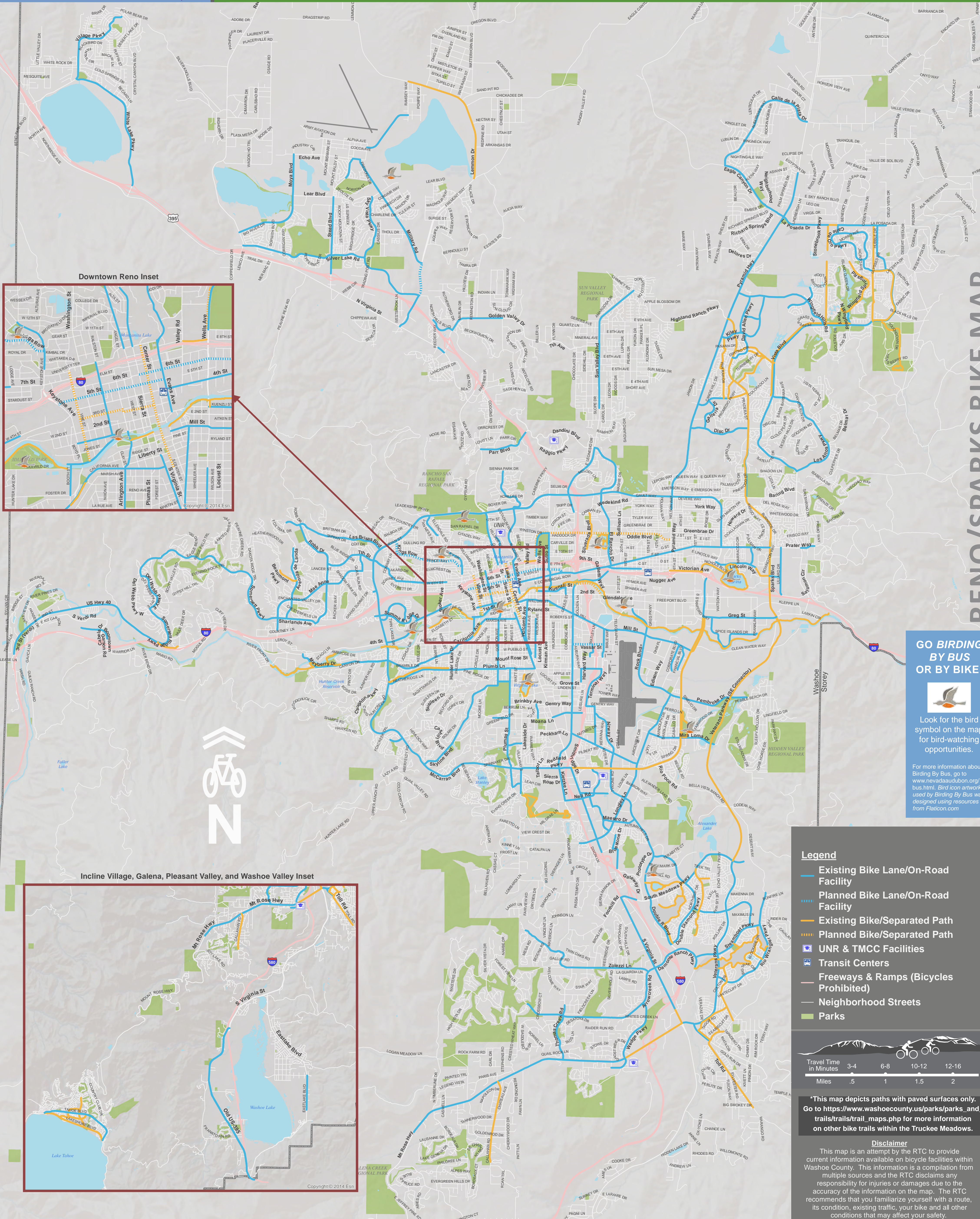
Washoe County
311

City of Sparks
<https://cityofsparks.us/resources/resource/citizen-request-form/>

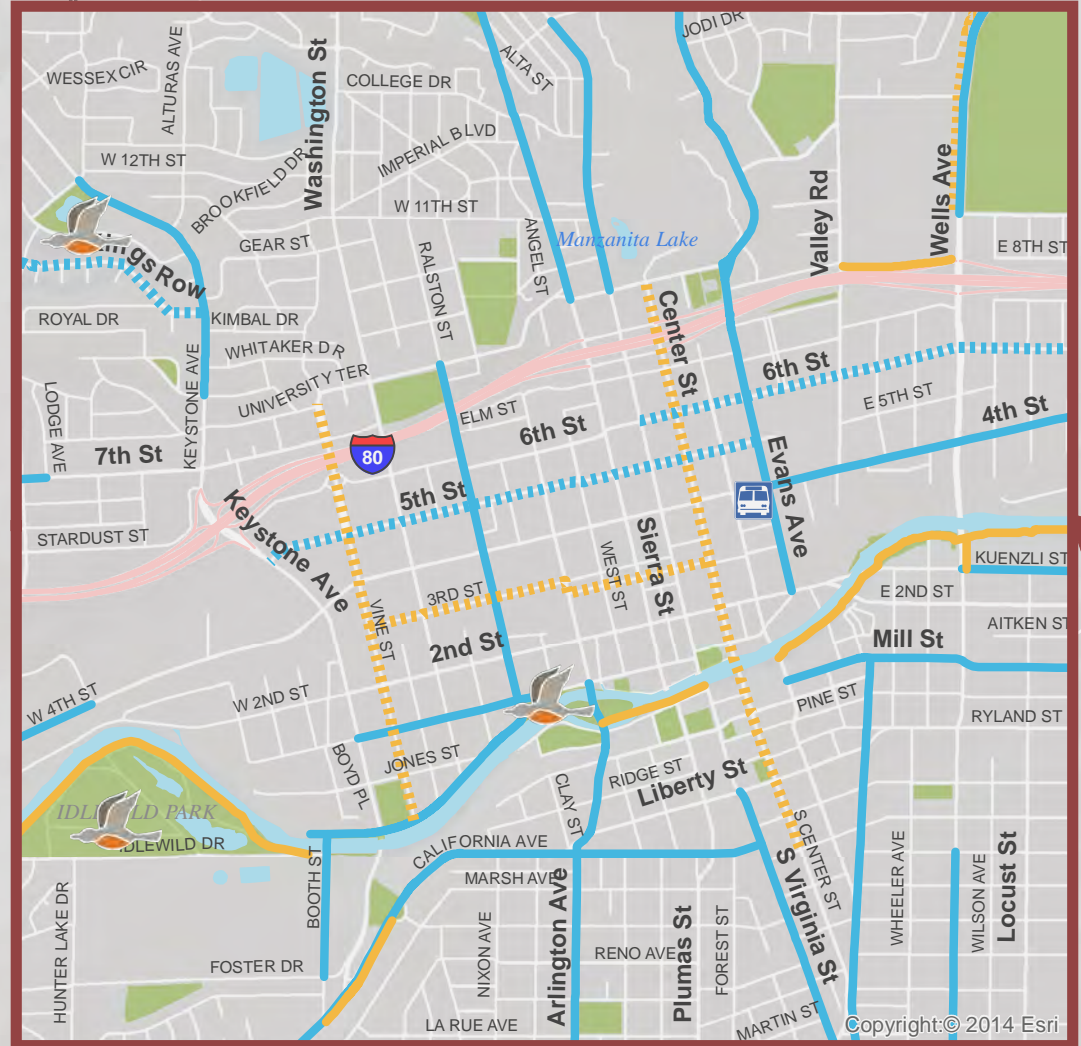
Nevada Department of Transportation
(775) 888-7000



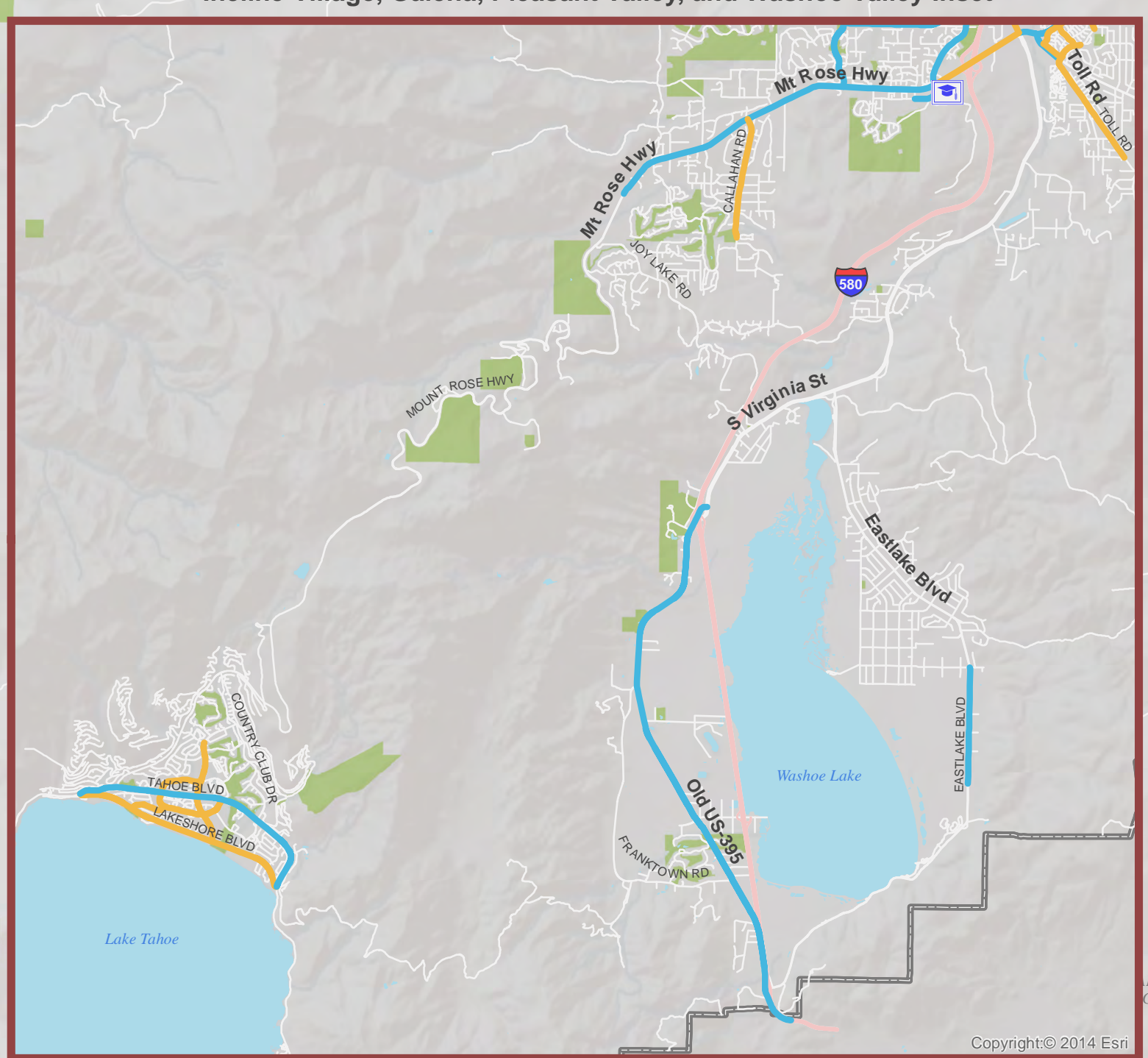
The RTC was recognized for its efforts to encourage everyone, including its employees, to choose sustainable and healthy modes of travel. The RTC was designated a Bike Friendly Business by the League of American Bicyclists at the silver level in 2016.



Downtown Reno Inset



Incline Village, Galena, Pleasant Valley, and Washoe Valley Inset



RENO/SPARKS BIKE MAP

GO BIRDING BY BUS OR BY BIKE!

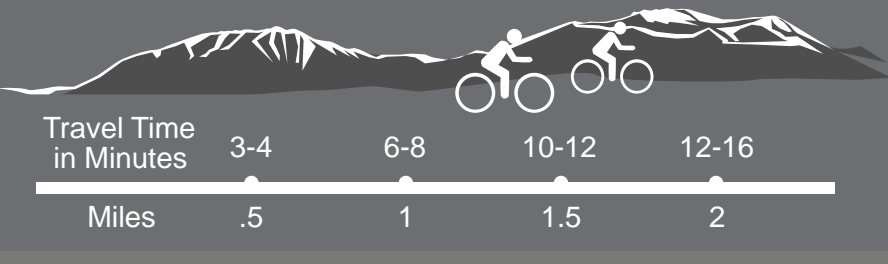


Look for the bird symbol on the map for bird-watching opportunities.

For more information about Birding By Bus, go to www.novadabirding.com/bus.html. Bird icon artwork used by Birding By Bus was designed using resources from FlatIcon.com

Legend

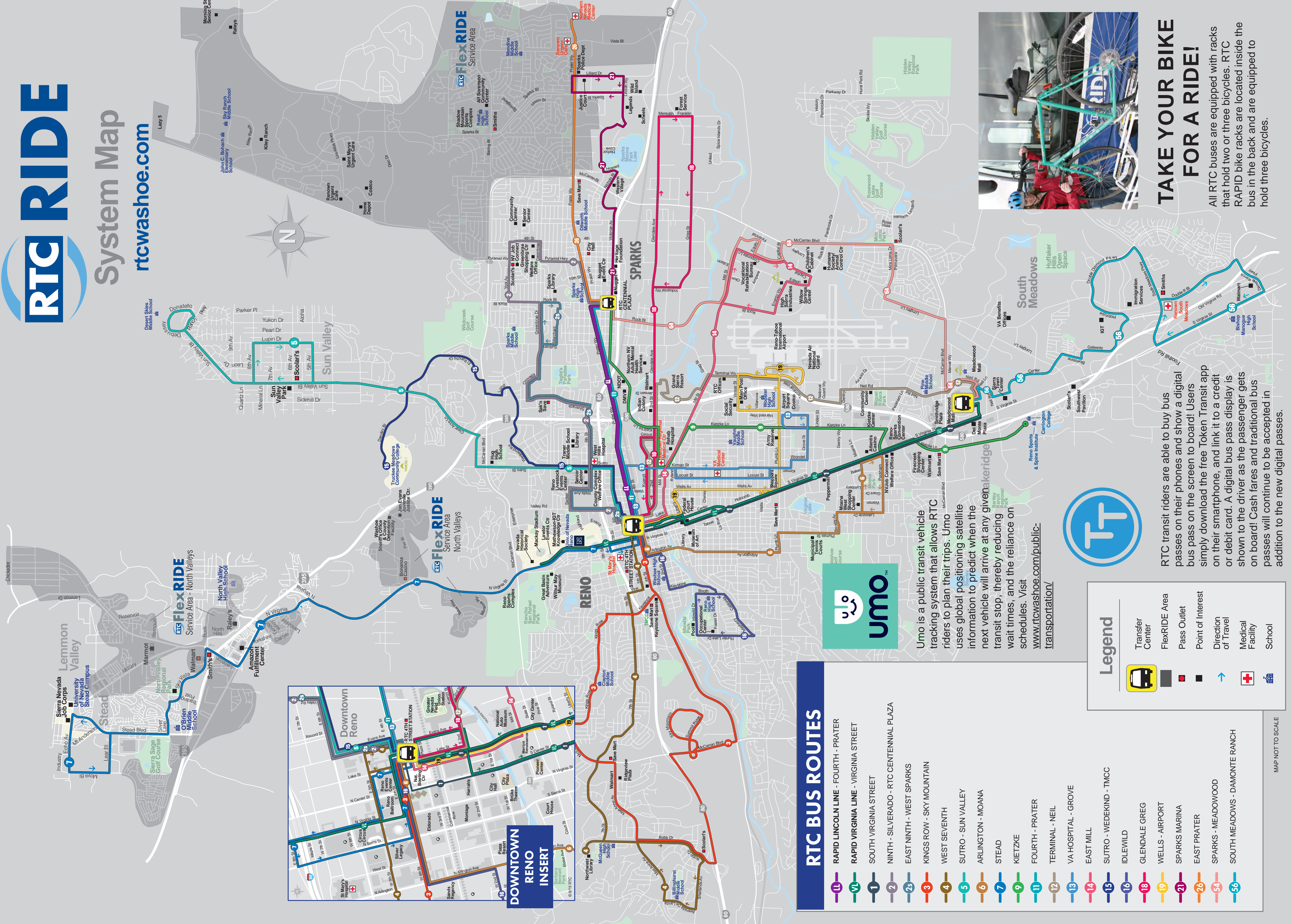
- Existing Bike Lane/On-Road Facility
- - - Planned Bike Lane/On-Road Facility
- Existing Bike/Separated Path
- - - Planned Bike/Separated Path
- UNR & TMCC Facilities
- Transit Centers
- Freeways & Ramps (Bicycles Prohibited)
- Neighborhood Streets
- Parks



*This map depicts paths with paved surfaces only. Go to https://www.washoecounty.us/parks/parks_and_trails/trails/trail_maps.php for more information on other bike trails within the Truckee Meadows.

Disclaimer

This map is an attempt by the RTC to provide current information available on bicycle facilities within Washoe County. This information is a compilation from multiple sources and the RTC disclaims any responsibility for injuries or damages due to the accuracy of the information on the map. The RTC recommends that you familiarize yourself with a route, its condition, existing traffic, your bike and all other conditions that may affect your safety.



TAKE YOUR BIKE FOR A RIDE!

All RTC buses are equipped with racks that hold two or three bicycles. RTC RAPID bike racks are located inside the bus in the back and are equipped to hold three bicycles.

RTC transit riders are able to buy bus passes on their phones and show a digital bus pass on the screen to board! Users simply download the free Token Transit app on their smartphone, and link it to a credit or debit card. A digital bus pass display is shown to the driver as the passenger gets on board! Cash fares and traditional bus passes will continue to be accepted in addition to the new digital passes.

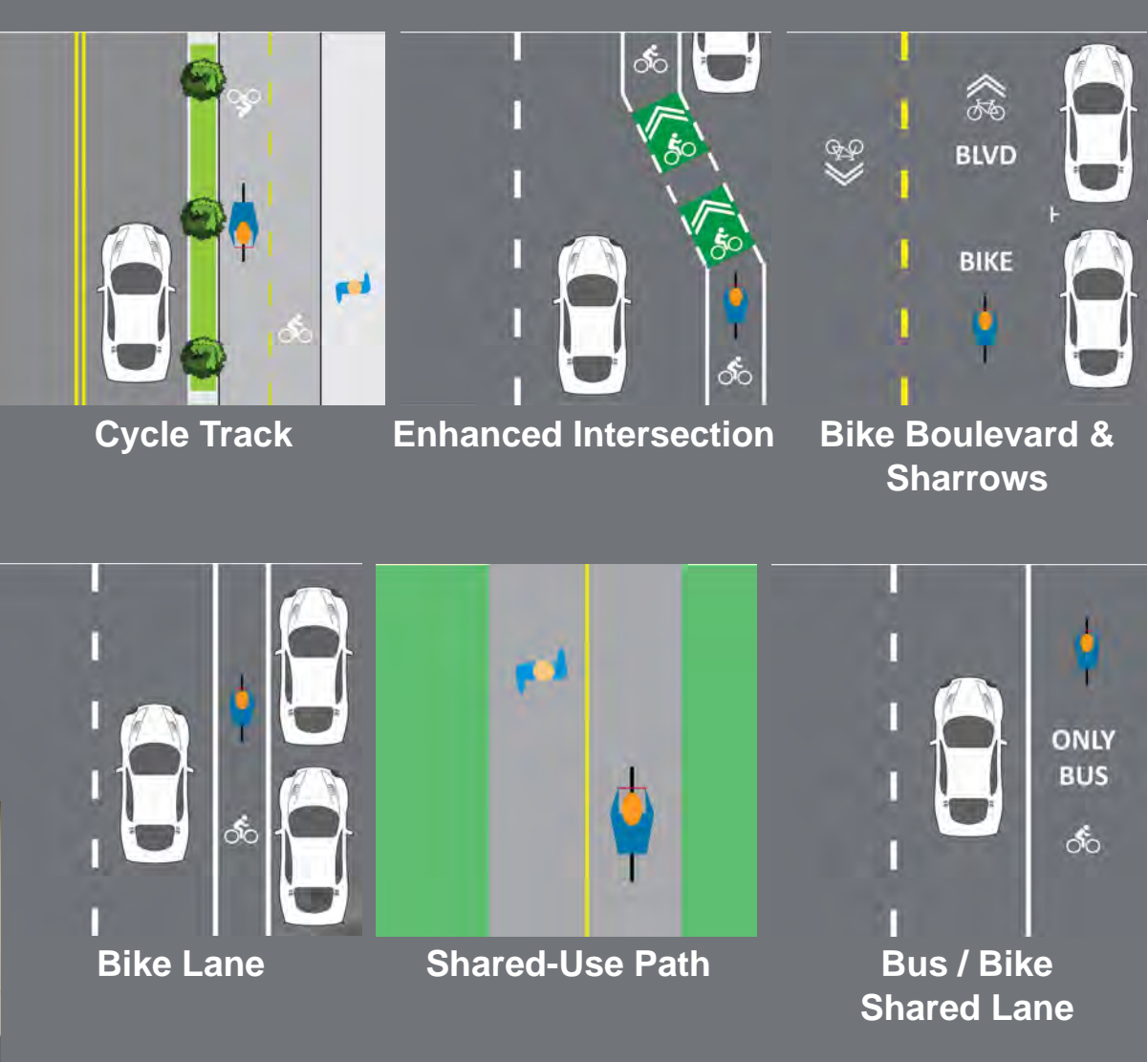
BE A SAFE CYCLIST

Lights & Reflectors Required by Law (NRS 484D 100 & NRS 484B 738)

- 1 White Light
- 2 Wheel Reflectors
- 3 Rear Reflector
- 4 Horn or Bell



BIKE FACILITIES — RENO-SPARKS



PREVENTING THEFT

- Use a high-quality U-Lock or chain
- Lock the frame and front wheel
- Remove the front wheel and lock it with the frame and rear wheel for extra security

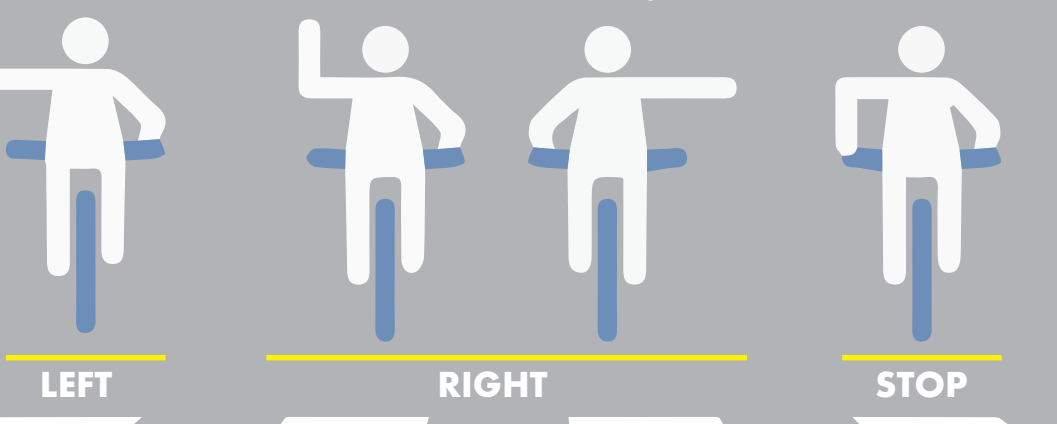


BE SAFE SEEN HEARD

SAFE PEDESTRIAN
When bicyclists reach their destination place, it is likely they will become pedestrians.

- Be an active pedestrian:
- UNPLUG** Don't be a distracted walker
 - BE BRIGHT** Wear bright clothing, reflectors and lights.
 - MAKE EYE CONTACT** Don't make assumptions, be cautious. Wait for traffic to stop.
 - STAY ALERT** All the way across the intersection.
 - NEVER JAYWALK** Cross streets in designated crossings.

BICYCLE HAND SIGNALS



BIKE REPAIR STATION

Free bike repair stations are available for the public to use at RTC 4TH STREET STATION and RTC CENTENNIAL PLAZA. The repair stations allow cyclists to inflate tires and make repairs. The repair stations feature tools on retractable cords and a design that is compliant with the Americans with Disabilities Act (ADA).

HELMET SAFETY



SCAN THE QR CODE FROM YOUR SMART PHONE TO SEE THE BIKE MAP

Just download any free QR code app from the app store on your smart phone.

Helmet use can reduce the risk of severe brain injury by up to **88%**



RTC'S FlexRIDE CURBSIDE-TO-CURBSIDE TRANSIT SERVICE!

RTC's FlexRIDE curbside-to-curbside transit service available in select areas of Sparks/Spanish Springs, Somerset/Verdi, and in select areas of North Valleys. Schedule your ride or find service area locations using the RTC Washoe FlexRIDE app on your smartphone or tablet or call a dispatcher at (775) 335-0035. Fares are the same as the standard RTC RIDE fares and you can expect to arrive to the curbside closest to your location within 8 to 15 minutes.

RTC SMART TRIPS

The RTC SMART TRIPS program assists businesses and citizens at large in using sustainable modes of transportation and trip-reduction strategies. Visit the RTC SMART TRIPS section of rtcwashoe.com or download the "RTC Smart Trips" App for additional information on bicycling resources to keep you motivated and safe.

The *Bike Buddy* trip-matching service at rtctripmatch.com will help you find other bicyclists who live and work near you. You can easily look for matches for trips you make regularly (such as to work) and also trips you make only occasionally (such as to a sporting event). New bicyclists can connect with more experienced bicyclists to gather tips, while experienced bicyclists can find new friends to ride with or novice bicyclists to assist. You can also look for carpool, walking, and bus buddies on the website or App. Use the website's commute calendar to track your trips by all sustainable modes to see exactly how RTC SMART TRIPS saves you money and improves air quality in the region. For more information, go to rtcwashoe.com, click on Public Transportation and look for RTC SMART TRIPS.

OTHER MAP RESOURCES

- Carson City**
<https://musclepowered.org/trails-maps/>
- Lake Tahoe**
www.tahoebike.org
- State Bike Touring Map**
www.nevadadot.com/home/showdocument?id=3690
- University of Nevada, Reno**
www.unr.edu/parking/parking-maps
- RTC Planning**
www.rtcwashoe.com/metropolitan-planning/